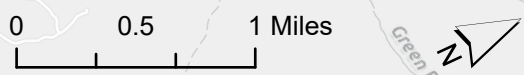
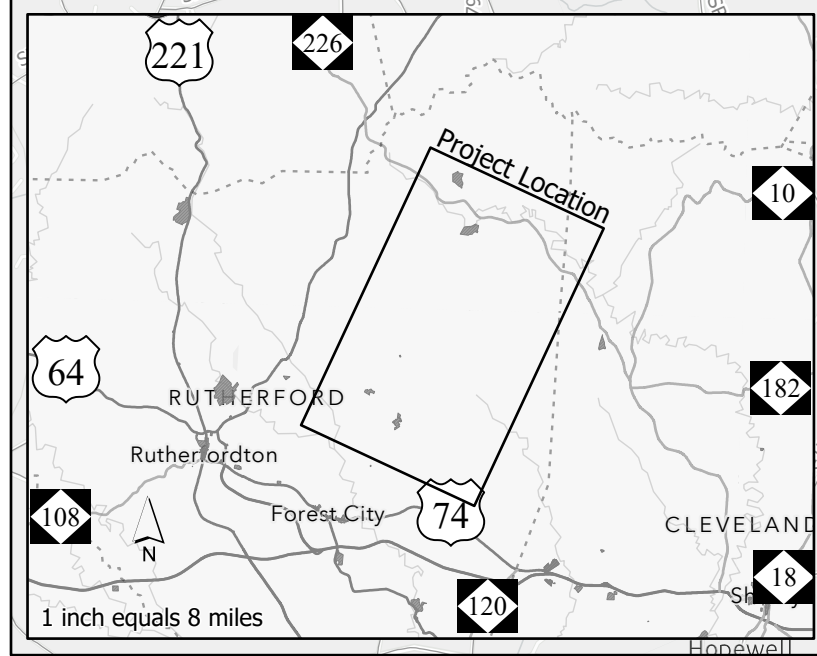
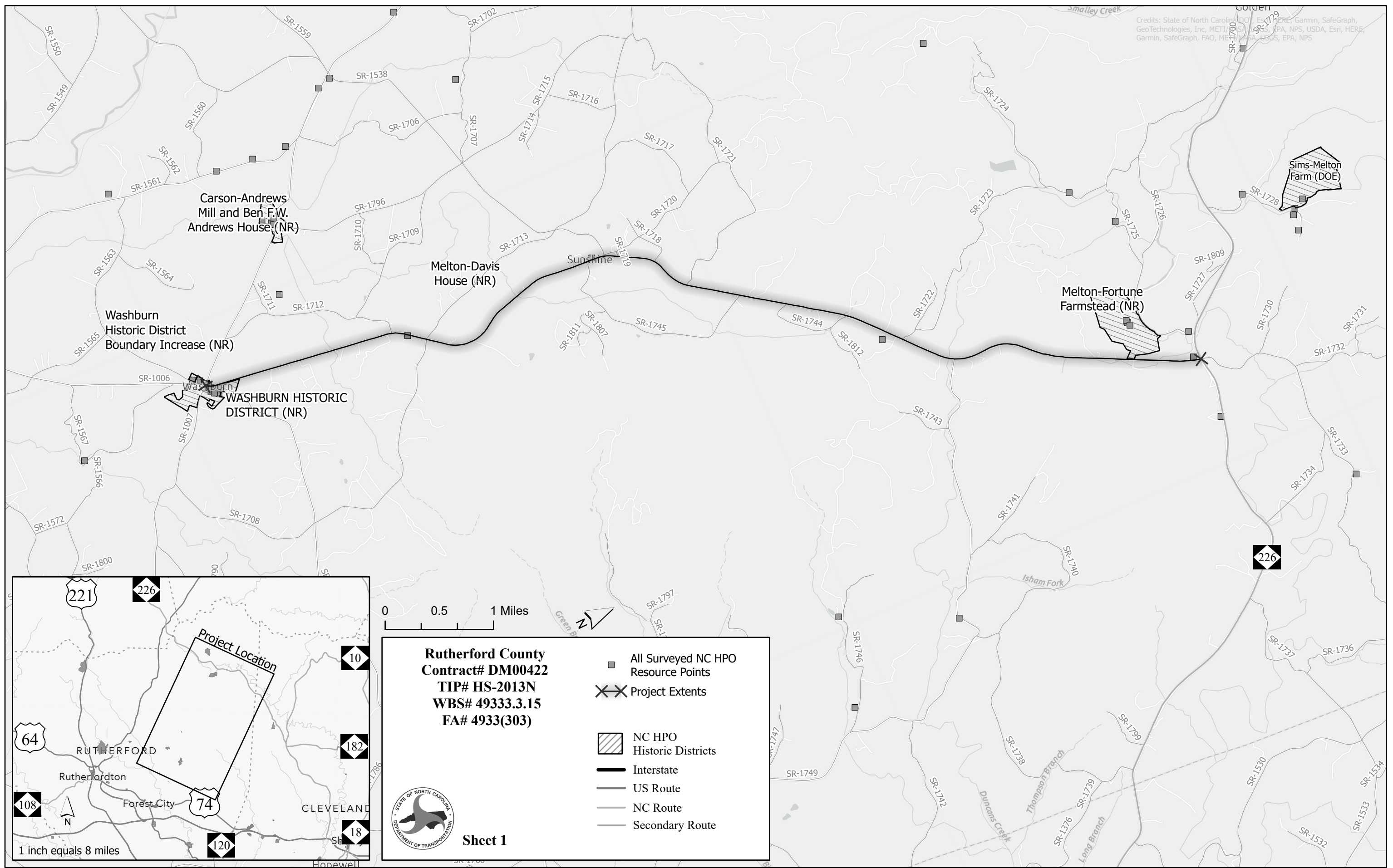



Credits: State of North Carolina, D.O.T., Esri, HERE, Garmin, SafeGraph, GeoTechnologies, Inc, METI, SAIGON, EPA, NPS, USDA, Esri, HERE, Garmin, SafeGraph, FAO, METI, SAIGON, EPA, NPS



**Rutherford County**  
**Contract# DM00422**  
**TIP# HS-2013N**  
**WBS# 49333.3.15**  
**FA# 4933(303)**

- All Surveyed NC HPO Resource Points
- Project Extents
- NC HPO Historic Districts
- Interstate
- US Route
- NC Route
- Secondary Route

 **Sheet 1**

STATE OF  
NORTH CAROLINA  
DEPT. OF TRANSPORTATION  
DIVISION OF HIGHWAYS  
RALEIGH, N.C.

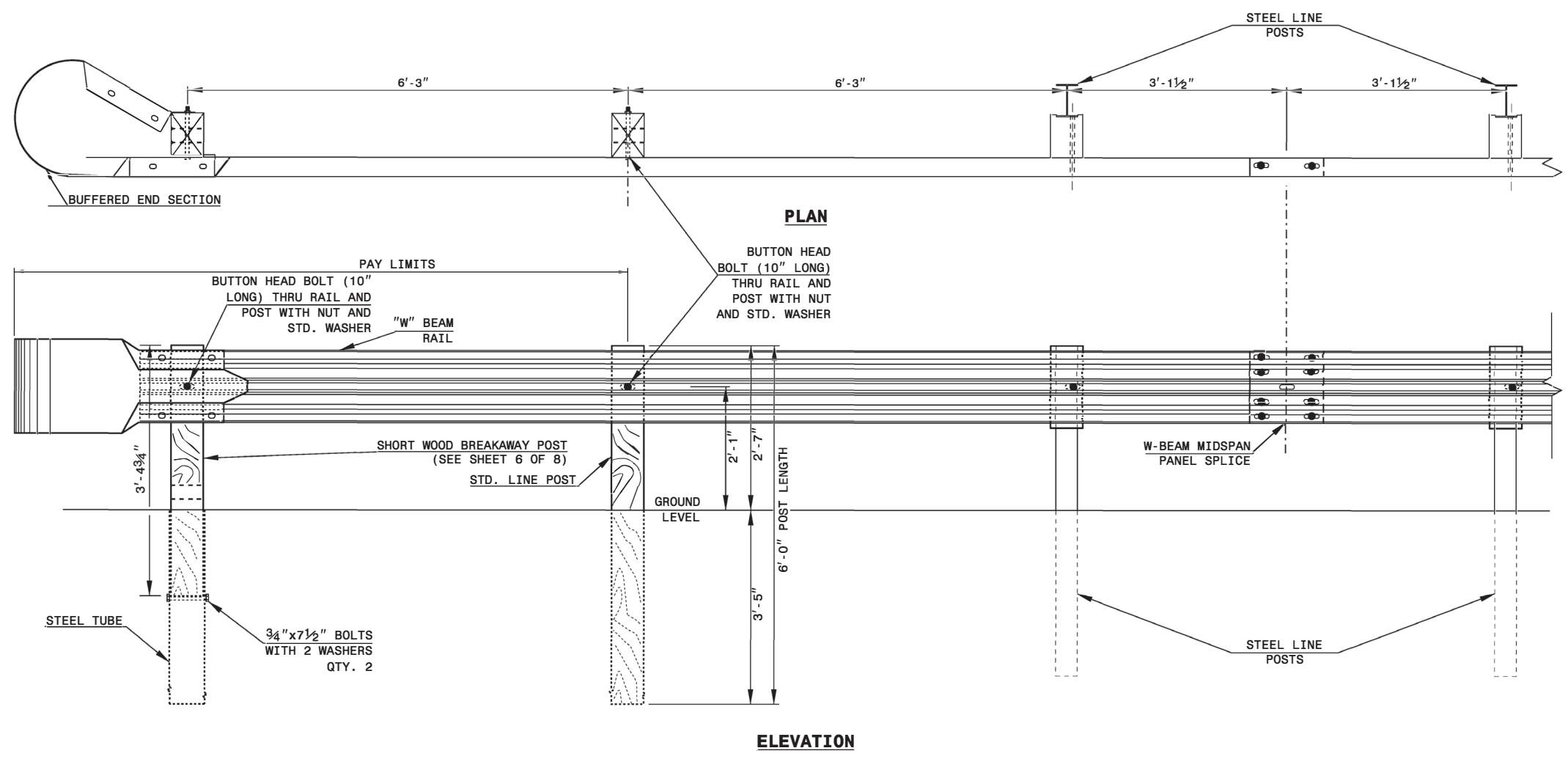
ROADWAY DETAIL DRAWING FOR  
**GUARDRAIL INSTALLATION**

SHEET OF

STATE OF  
NORTH CAROLINA  
DEPT. OF TRANSPORTATION  
DIVISION OF HIGHWAYS  
RALEIGH, N.C.

ROADWAY DETAIL DRAWING FOR  
**GUARDRAIL INSTALLATION**

SHEET OF



**TRAILING END UNIT ASSEMBLY**  
**A.T.-1 SYSTEM**



DOCUMENT NOT CONSIDERED FINAL  
UNLESS ALL SIGNATURES COMPLETED

**CONTRACTS STANDARDS  
AND DEVELOPMENT UNIT**  
Office 919-707-6950 FAX 919-250-4119

**A.T.-1 SYSTEM**

ORIGINAL BY: \_\_\_\_\_ DATE: \_\_\_\_\_  
MODIFIED BY: \_\_\_\_\_ DATE: \_\_\_\_\_  
CHECKED BY: \_\_\_\_\_ DATE: \_\_\_\_\_  
FILE SPEC.: \_\_\_\_\_

STATE OF NORTH CAROLINA  
DEPT. OF TRANSPORTATION  
DIVISION OF HIGHWAYS  
RALEIGH, N.C.

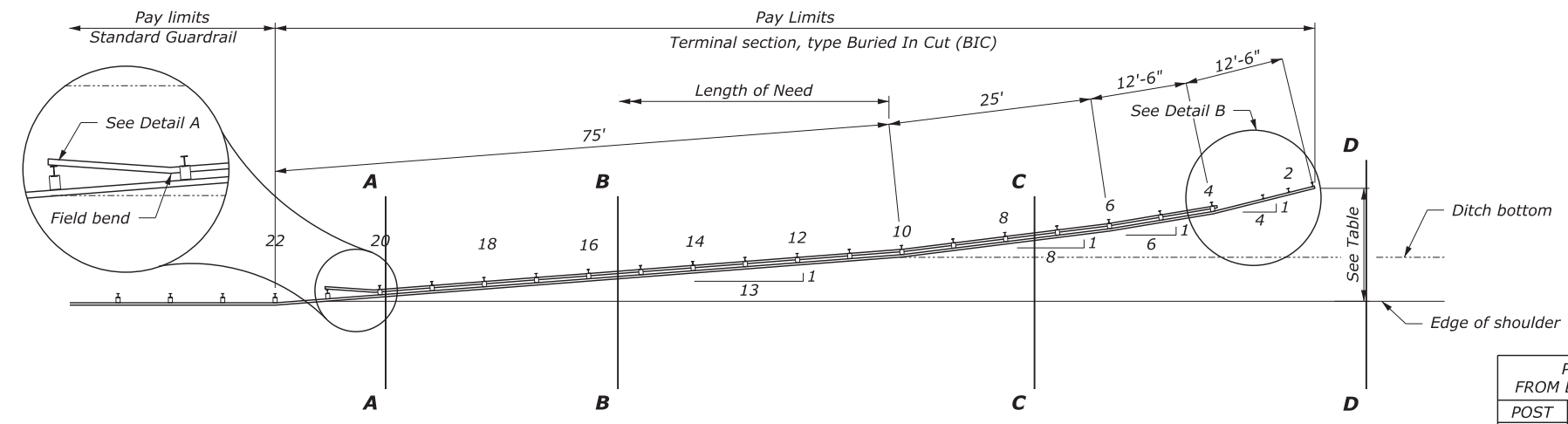
ROADWAY DETAIL DRAWING FOR  
**GUARDRAIL PLACEMENT  
BURIED IN CUT END UNIT**

SHEET 1 OF 2  
**862D01**

STATE OF NORTH CAROLINA  
DEPT. OF TRANSPORTATION  
DIVISION OF HIGHWAYS  
RALEIGH, N.C.

ROADWAY DETAIL DRAWING FOR  
**GUARDRAIL PLACEMENT  
BURIED IN CUT END UNIT**

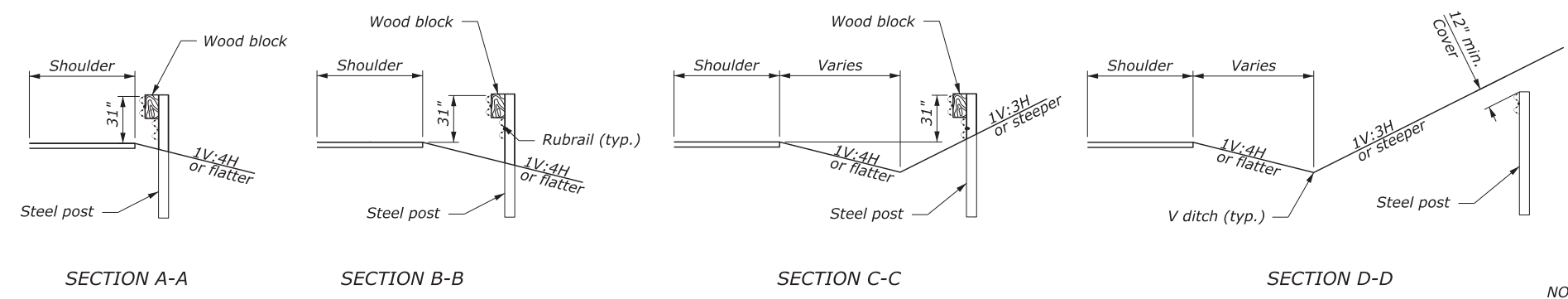
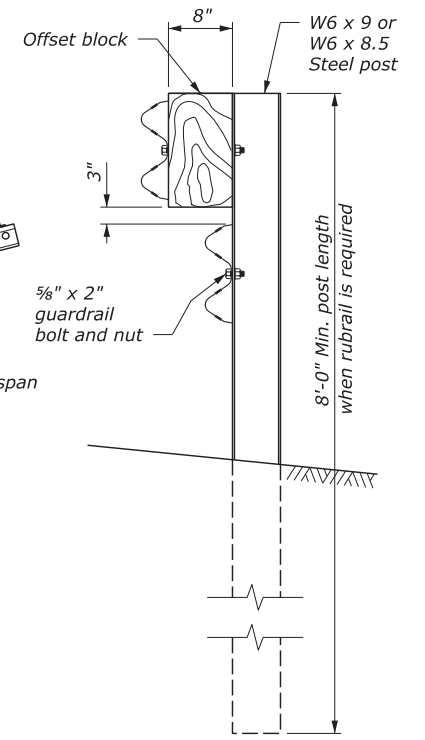
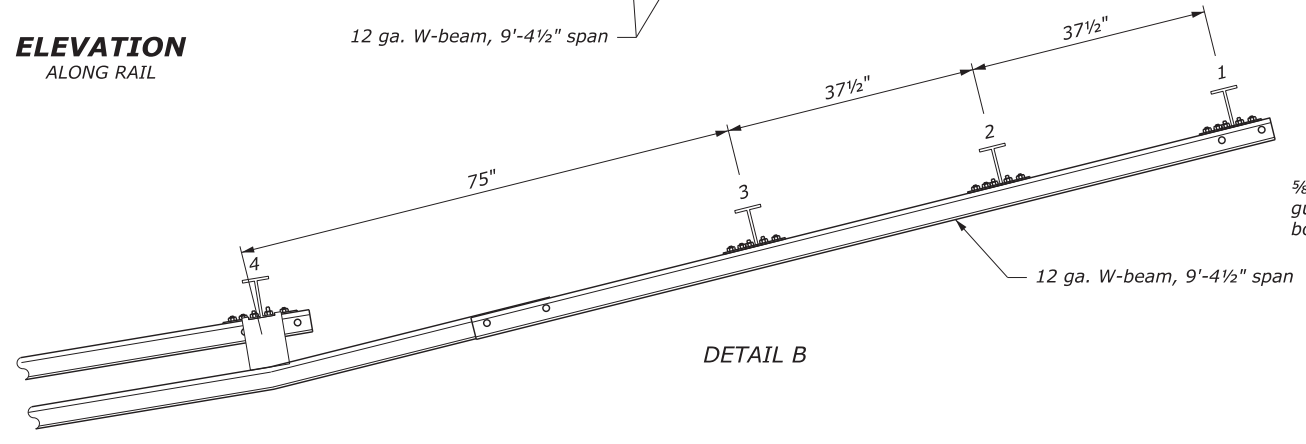
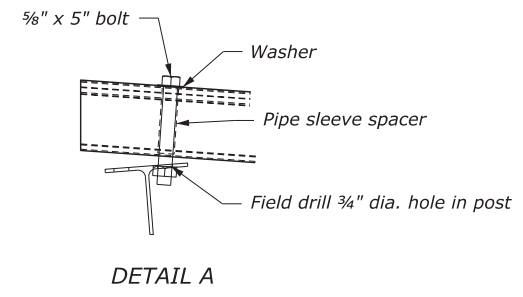
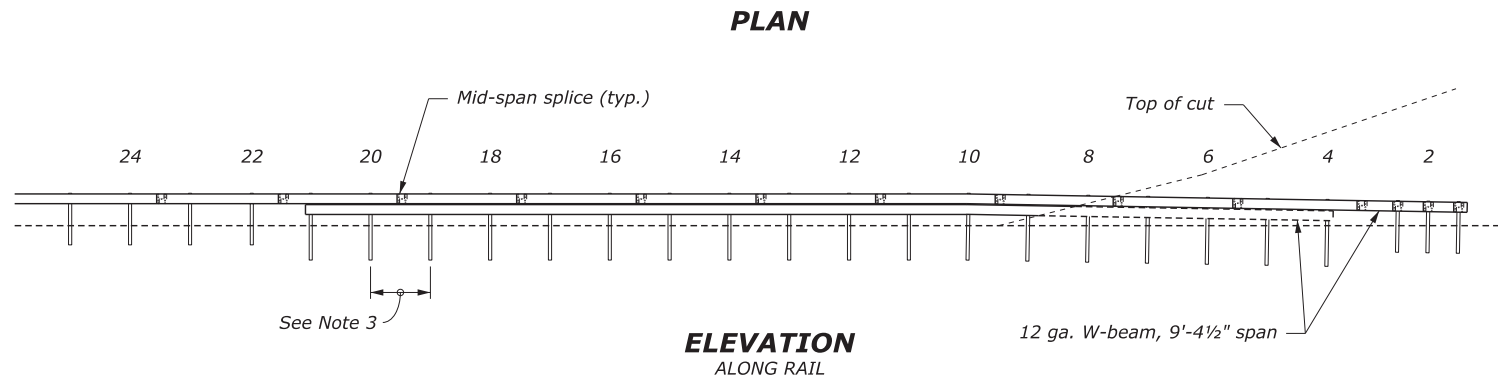
SHEET 1 OF 2  
**862D01**



**DRAWING NOT TO SCALE**

- NOTE:**
1. See Detail sheet 2 of 2 for other details.
  2. Steel posts shown.
  3. Typical post spacing is 6'-3" unless otherwise noted.

POST OFFSETS FROM EDGE OF SHOULDER	
POST	DISTANCE
1	13'-11 <sup>3</sup> / <sub>4</sub> "
4	10'-11"
6	8'-10 <sup>1</sup> / <sub>4</sub> "
10	69"



DOCUMENT NOT CONSIDERED FINAL UNLESS ALL SIGNATURES COMPLETED

**CONTRACTS STANDARDS AND DEVELOPMENT UNIT**  
Office 919-707-6950 FAX 919-250-4119

**GUARDRAIL PLACEMENT BURIED IN CUT END UNIT**

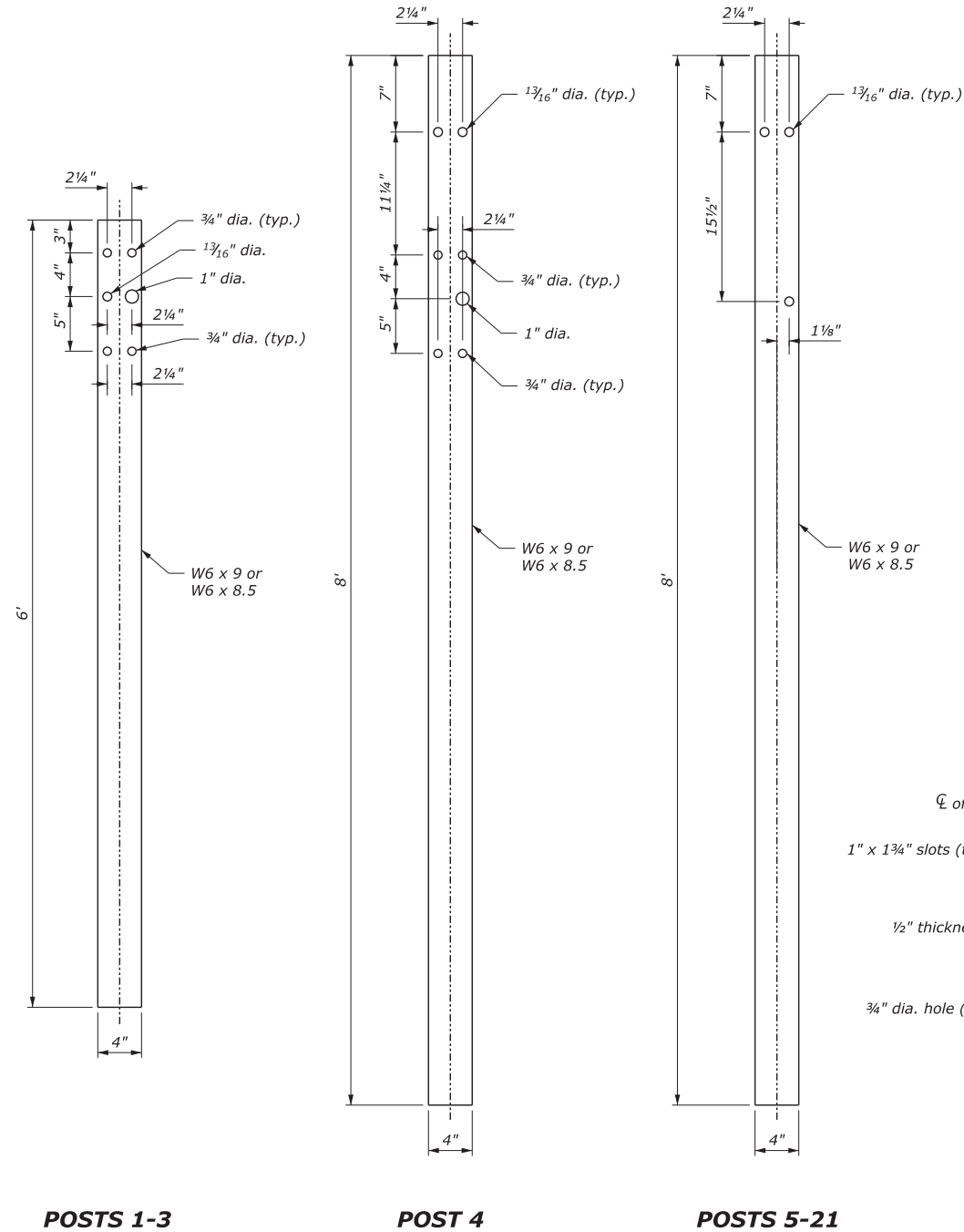
ORIGINAL BY: \_\_\_\_\_ DATE: \_\_\_\_\_  
 MODIFIED BY: \_\_\_\_\_ DATE: \_\_\_\_\_  
 CHECKED BY: \_\_\_\_\_ DATE: \_\_\_\_\_  
 FILE SPEC.: \_\_\_\_\_

STATE OF NORTH CAROLINA  
DEPT. OF TRANSPORTATION  
DIVISION OF HIGHWAYS  
RALEIGH, N.C.

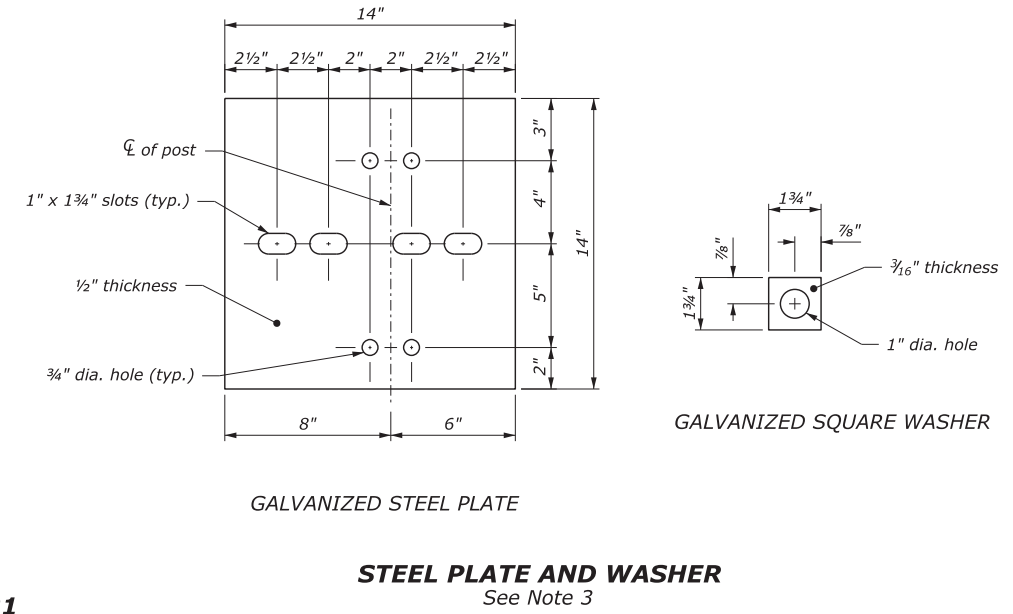
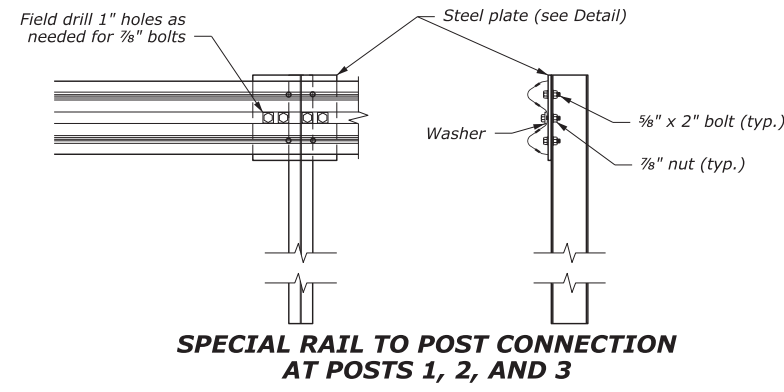
ROADWAY DETAIL DRAWING FOR  
**GUARDRAIL PLACEMENT**  
BURIED IN CUT END UNIT

STATE OF NORTH CAROLINA  
DEPT. OF TRANSPORTATION  
DIVISION OF HIGHWAYS  
RALEIGH, N.C.

ROADWAY DETAIL DRAWING FOR  
**GUARDRAIL PLACEMENT**  
BURIED IN CUT END UNIT



- NOTE:**
1. See Sheet 1 of 2 for terminal layout.
  2. Use zinc rich paint to coat field drilled holes.
  3. Anchor plate and hardware are typical on top rail of Posts 1 -3 and rub rail at Post 4.



SHEET 2 OF 2  
**862D01**

SHEET 2 OF 2  
**862D01**



CONTRACTS STANDARDS AND DEVELOPMENT UNIT  
Office 919-707-6950 FAX 919-250-4119

**GUARDRAIL PLACEMENT  
BURIED IN CUT END UNIT**

ORIGINAL BY: \_\_\_\_\_ DATE: \_\_\_\_\_  
 MODIFIED BY: \_\_\_\_\_ DATE: \_\_\_\_\_  
 CHECKED BY: \_\_\_\_\_ DATE: \_\_\_\_\_  
 FILE SPEC.: \_\_\_\_\_

DOCUMENT NOT CONSIDERED FINAL  
UNLESS ALL SIGNATURES COMPLETED

PROJECT NO.	SHEET NO.
49333.3.15	5

### GUARDRAIL ITEM SUMMARY

LOCATION NO	ROUTE	DESCRIPTION	SHOULDER LT/RT	303000000-E	304500000-E	314500000-E	316550000-N	319500000-N	328700000-N	343500000-N	NOTES
				STEEL BM GUARDRAIL	STEEL BM GUARDRAIL, SHOP CURVED	EXTRA LENGTH GUARDRAIL POST (8' STEEL)	GUARDRAIL END UNITS, TYPE BURIED IN CUT	GUARDRAIL END UNITS, TYPE AT-1	GUARDRAIL END UNITS, TYPE TL-3	GUARDRAIL POST BOX CULVERT ANCHOR UNIT	
				LF	LF	EA	EA	EA	EA	EA	
1	SR 1006 (Bostic-Sunshine Hwy)	APPROXIMATELY 0.05 MILES FROM NC 226	LT	100					2		
2	SR 1006 (Bostic-Sunshine Hwy)	APPROXIMATELY 0.07 MILES FROM NC 226	RT	50					2		
3	SR 1006 (Bostic-Sunshine Hwy)	APPROXIMATELY 0.34 MILES FROM NC 226	LT	700		5	1		1		
4	SR 1006 (Bostic-Sunshine Hwy)	APPROXIMATELY 1.17 MILES FROM NC 226	RT	575					2		
5	SR 1006 (Bostic-Sunshine Hwy)	APPROXIMATELY 1.86 MILES FROM NC 226	RT	50	12.5			1	1		
6	SR 1006 (Bostic-Sunshine Hwy)	APPROXIMATELY 2.05 MILES FROM NC 226	LT	75					2		
7	SR 1006 (Bostic-Sunshine Hwy)	APPROXIMATELY 2.31 MILES FROM NC 226	RT	400					2		
8	SR 1006 (Bostic-Sunshine Hwy)	APPROXIMATELY 2.33 MILES FROM NC 226	LT	500	43.75			1	1		Terminate at SR 1749 (Duncans Creek Rd)
9	SR 1006 (Bostic-Sunshine Hwy)	APPROXIMATELY 2.51 MILES FROM NC 226	LT	600					2		
10	SR 1006 (Bostic-Sunshine Hwy)	APPROXIMATELY 2.83 MILES FROM NC 226	LT	312.5			1		1		
11	SR 1006 (Bostic-Sunshine Hwy)	APPROXIMATELY 2.86 MILES FROM NC 226	RT	325	25			1	1		Begin rail along SR 1723 (Luckadoo Mtn Rd)
12	SR 1006 (Bostic-Sunshine Hwy)	APPROXIMATELY 3.02 MILES FROM NC 226	LT	1225		10			2		
13	SR 1006 (Bostic-Sunshine Hwy)	APPROXIMATELY 3.06 MILES FROM NC 226	RT	325					2		Begin rail at Troth Ln
14	SR 1006 (Bostic-Sunshine Hwy)	APPROXIMATELY 3.42 MILES FROM NC 226	LT	525	68.75			1	1		Begin rail along left side of SR 1744 (Ramsey Rd) Northern Entrance
15	SR 1006 (Bostic-Sunshine Hwy)	APPROXIMATELY 3.72 MILES FROM NC 226	LT	337.5					2		
16	SR 1006 (Bostic-Sunshine Hwy)	APPROXIMATELY 3.72 MILES FROM NC 226	RT	350			1		1		
17	SR 1006 (Bostic-Sunshine Hwy)	APPROXIMATELY 3.98 MILES FROM NC 226	RT	350					2		
18	SR 1006 (Bostic-Sunshine Hwy)	APPROXIMATELY 3.99 MILES FROM NC 226	LT	450	37.5			1	1		Begin rail along left side of SR 1744 (Ramsey Rd) Southern Entrance
19	SR 1006 (Bostic-Sunshine Hwy)	APPROXIMATELY 5.17 MILES FROM NC 226	RT	700	18.75	5		1	1		
20	SR 1006 (Bostic-Sunshine Hwy)	APPROXIMATELY 5.21 MILES FROM NC 226	LT	275	12.5			1	1		
21	SR 1006 (Bostic-Sunshine Hwy)	APPROXIMATELY 6.37 MILES FROM NC 226	RT	212.5					2		
22	SR 1006 (Bostic-Sunshine Hwy)	APPROXIMATELY 6.60 MILES FROM NC 226	RT	425	6.25			1	1	12	
23	SR 1006 (Bostic-Sunshine Hwy)	APPROXIMATELY 6.69 MILES FROM NC 226	LT	100					2	12	
<b>TOTAL</b>				<b>8,962.50</b>	<b>225.00</b>	<b>20</b>	<b>3</b>	<b>8</b>	<b>35</b>	<b>24</b>	

**NOTES:** QUANTITIES ARE ESTIMATED AND MAY CHANGE ACCORDING TO ACTUAL FIELD CONDITIONS.  
THE ENGINEER SHALL FIELD MARK ALL PROPOSED GUARDRAIL AND END UNITS PRIOR TO BEGINNING CONSTRUCTION AT EACH LOCATION.

INSTALL EXTRA LENGTH GUARDRAIL POSTS AT LOCATIONS INDICATED AND AS DIRECTED BY THE ENGINEER.

